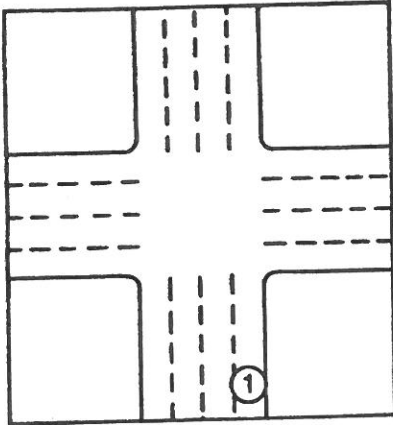
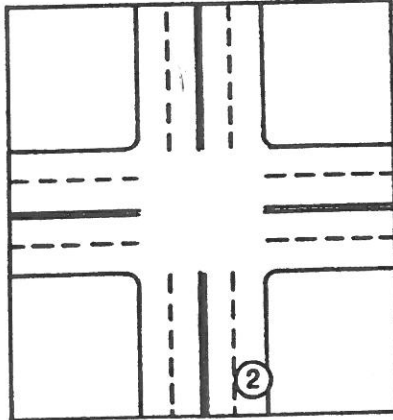


Choosing the Correct Turn

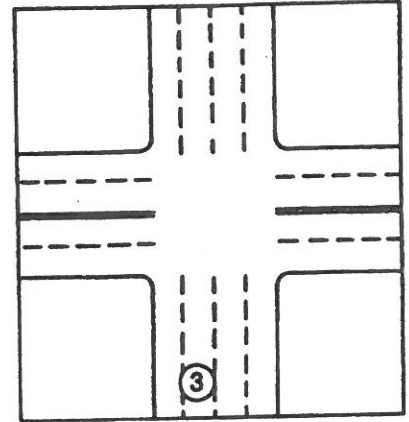
The intersections shown below have two-way streets, one-way streets, or combinations of both. Select the correct path of travel for the turn described under each picture. Draw a line with an arrow from the circled number to the location where you would finish the turn. Be sure to consider lane lines and markings that indicate a two-way or one-way street.



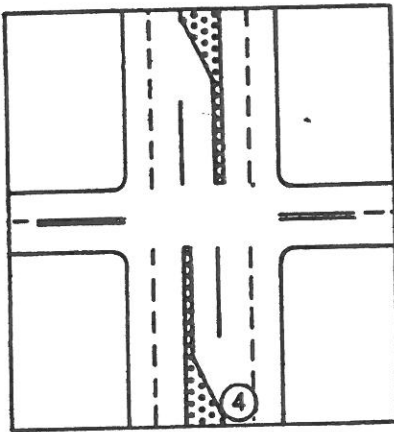
Make a right turn.



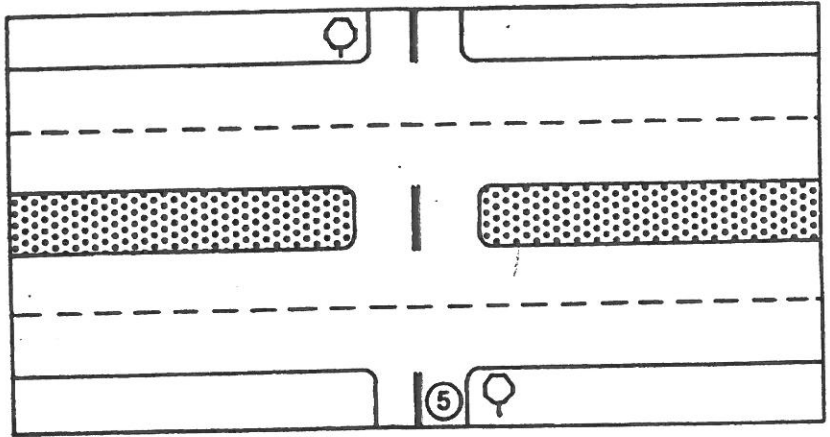
Make a left turn.



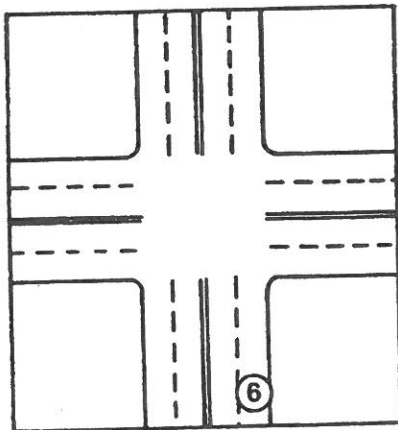
Make a left turn.



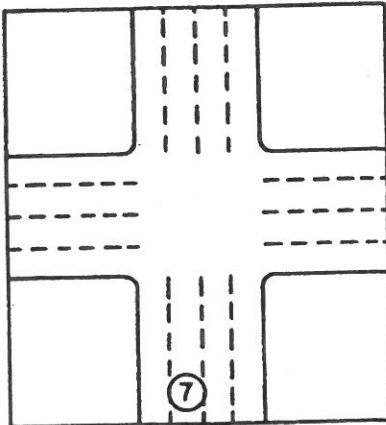
Make a left turn.



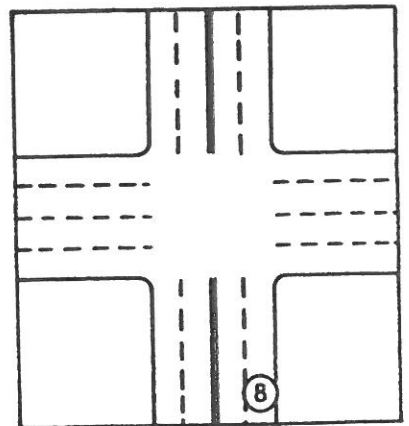
Make a left turn.



Make a right turn.



Make a left turn.



Make a left turn.